

"Antikmauer" or "C-Line-Block"

for facing or boundary walls

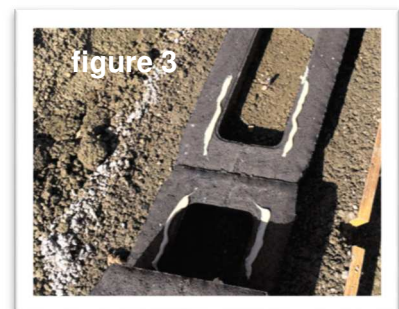
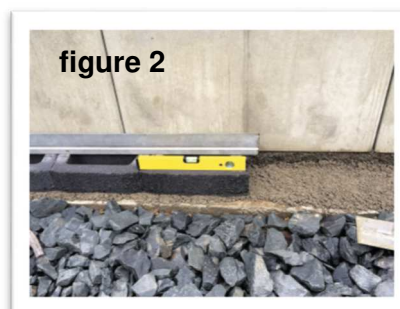
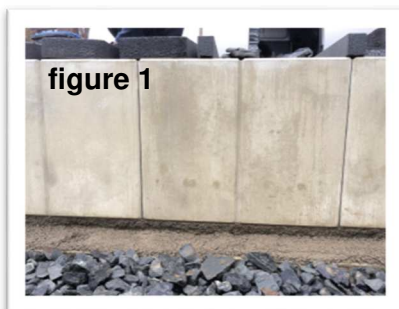
Facing stone: Thanks to its narrow width of just 20 cm, our "Antikmauer" stone and the C-Line-Block can also be used to 'face' an existing boundary support or wall.



The only prerequisite is an adequately load-bearing foundation* directly adjacent to the existing support or wall (see fig. 1). The first row of stones must be carefully laid to be level and true (see fig. 2). Subsequent rows are simply added by stacking stones end-to-end to form the facing wall. Individual courses should be securely glued down with a fixing adhesive that is frost-proof or otherwise approved for outdoor use (see fig. 3).

Tip: The cavities in the stones can be filled with layers of water-permeable materials such as gravel, ballast or lava rock.

*Adequate water drainage must be provided in the footing area.



Boundary walls: Ensure an adequately load-bearing foundation is available (footing must be below the frost line, see details in our 'Installation and working instructions'). Lay the first row of stones level and true along the fence line, bedding in on the concrete foundation. Fill cavities with concrete (fig. 4). Subsequent courses should be securely glued down with a fixing adhesive that is frost-proof or approved for outdoor use (see fig. 5).

Important: Our "Antikmauer" and the "C-Line-Block" are not strong enough for use as a retaining wall. Accordingly, a wall built with our "Antikmauer" stones or the "C-Line-Block" should always be free-standing, without earth pressure from a slope or embankment (fig. 6).



All footings used as wall foundations must be below the frost line.
For information about cutting start and end stones to fit, please see our Downloads.