

"Gartenmauer" as a privacy screen

With our "Gartenmauer", privacy screen walls can be constructed at a width of 20 cm and at even greater heights if these are reinforced with pillars (40 × 40 cm) that have been given a proper foundation. A frost-free footing should be provided both for the pillars and the garden wall blocks themselves (for details of how to excavate a footing, see our 'General installation and working instructions').

Structural requirements:

The basis for these measurements is a garden wall with 40 × 40 cm pillars – the structural focus is the max. load on the centre pillars. The top of the intermediate wall is finished off with a 2 x Ø 10 mm ring beam using reinforcement steel. The pillars are filled with concrete and reinforced in the corners with 1 × Ø 8 mm reinforcement steel per corner. The pillars require a separate foundation; the foundation should also feature an embedded structural reinforcement.

The following wind loads are assumed:

Wind zone 1, non-coastal, area B, degree of solidity 1, no shading

Where wind conditions differ, a separate calculation must be made and the following table is therefore not valid.

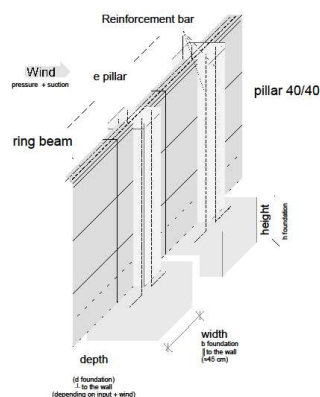
The following sample structures are possible:

Types of wall					
structure	straight wall				corner wall
wall height	1,80 m	1,80 m	2,00 m	2,00 m	1,60 m
wall sections	2 pcs.	3 pcs.	2 pcs.	3 pcs.	3 pcs.
pillar center distance	2,80 m	3,20 m	2,80 m	3,20 m	2,80 m
total wall length	6,00 m	10,00 m	6,00 m	10,00 m	8,80 m
Foundations provided as necessary under each pillar					
depth d (Foundation)	1,30 m	1,50 m	1,30 m	1,60 m	1,30 m
height h (Foundation)	0,35 m	0,40 m	0,40 m	0,50 m	0,35 m
width b (Foundation)	0,45 m	0,45 m	0,45 m	0,45 m	0,45 m

A privacy screen wall can be continued at a right angle around the corner – the basic principle is shown in sketch C.

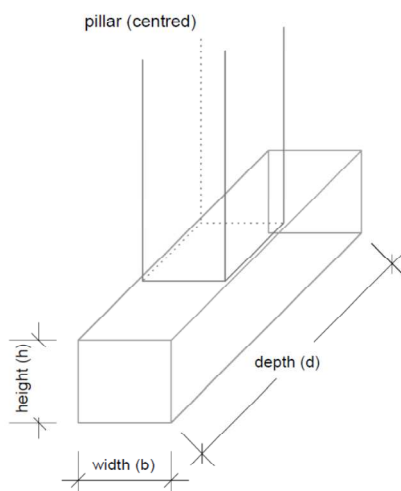
Sketch A

Sketch "Gartenmauer"
Foundation pillar



erf. = needed for structural survey (E≥1)
gew. = chosen by user

Sketch B



Sketch C

